

2024

VISION FORWARD



Dr. Joshua A. Harris, Sr. Pastor
Alexis Williams, Exec. Admin. Asst. to Pastor
1st Gethsemane Baptist Church



TABLE OF CONTENTS

We Are 1st G	Pg. 3
Pastor's Pen	Pg. 4
The 1st G Experience	Pg. 5
Vision 2030	Pg. 6-7
Center for Family Development	Pg. 8
Daniel Fast 2024	Pg. 9
C.A.R.E. Team/Tribes	Pg. 10
Important Dates	Pg. 11
1st G Leadership	Pg. 12
Organizational Chart	Pg. 13
1st G In Action	Pg. 14
QR Codes/Social Media	Pg. 15
Contact/Worship Service Information	Pg. 16



WE ARE 1ST G

Our Vision

To G.R.O.W. People in Christ that will G.R.O.W. People for Christ

Our Mission

G-Grow people through the teaching and preaching of God's Word.

R-Reconnect generations and cultures to God and each other through worship, fellowship, and service.

O-Operate in our Spiritual Gifts to extol Christ, edify the Church, and enhance our Community.

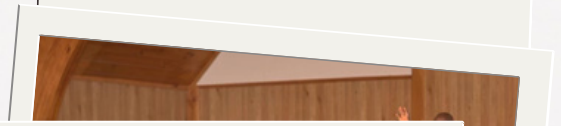
W-Win the City for Christ!

Core Values

We Love

We Serve

We Give



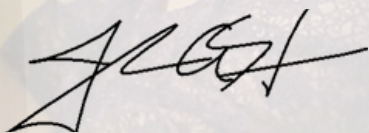
PASTOR'S PEN

Greetings 1st Nation,

I pray this message finds you and your families well and in good spirits. The year 2023 proved to be an amazing year for us as a church full of shared joys, victories, and much growth. To God be the glory! With all of the blessings we were able to count last year, we still have an unwavering spirit of expectation as we move onward and upward into the year 2024. I look forward to us stepping by faith into the future of "VISION 2030: Growing into Greater". We plan to GROW Spiritually, Generationally, Digitally, Financially, and Communally. I am admonishing all 1st G Members to Be INVOLVED, to Be INVESTORS, and to BE INVITERS.

Please take time to review this year's Vision Forward Booklet which is filled with vital and valuable information concerning where we as a church are going from here. I am beyond excited about this season and I look forward to once again partnering with you in the Lord's service. May God's choicest blessings be upon you and your families. I love you all. Here we GROW again!

In God's Grip,



Dr. Joshua A. Harris Sr.
Pastor



THE 1ST G EXPERIENCE

What People are saying about the 1st G Experience:

"From the front door to the worship to the back door there's a family focused energy that's in this place. You can sense the presence of God and you can see the involvement of family."

- Dr Kilen Gray, Dean of Community Life at Louisville Presbyterian Theological Seminary

"1st G has all of the progressive digital features such as QR codes for order of service, online giving and a YouTube page that you would find in a large mega church but the feeling of a warm connection that you get from a smaller church where you do not just feel like a number."

- Sis. Cara Venning, 1st G Member

"1st G is the perfect balance of traditional and contemporary worship and fellowship!"

- Sis. Bianca McClenney, 1st G Member

"There is no experience like the 1st G experience!"

- Dr. Joshua A. Harris Sr., Pastor



2023 Snapshot *As of December 24th

Average Sunday Attendance: 235 (On Campus)

New Members: 45

Candidates for Baptism: 17

Membership: Approximately 325



VISION 2030

VISION 2030: Growing into GREATER

"I tell you the truth, anyone who believes in me will do the same works I have done, and even greater works, because I am going to be with the Father. You can ask for anything in my name, and I will do it, so that the Son can bring glory to the Father. Yes, ask me for anything in my name, and I will do it!" (John 14:12-14 NLT)

I. Growing Spiritually: Being the Church Biblically

Bedrock Scripture: Acts 2:42-47

Growth for the believer does not begin on the outside in but the inside out. As a church we will greater commit ourselves to Christian discipleship through regular worship, study of scripture, leadership development, and prayer.



In our near future we will offer

- **More Opportunities to GROW**
- **More Opportunities to GIVE**
- **More Opportunities to GROUP**

II. Growing Generationally: Bridging the Gap

Bedrock Scripture: 1 Peter 2:9

We serve the God of Abraham, Isaac, and Jacob. God is a god of all generations. It has been said that many churches are one generation away from extinction but not us, not at 1st G. We are beyond blessed as a congregation to literally have 5 generations in one church and although that is great God has already shown me that there is more in store. As a church we want to be even more intentional about seeing our congregation GROW generationally. The family reunion shouldn't be at the funeral, the family reunion should be every Sunday we gather together at the age old meeting place, the church. At times this may cause us to look and sound a little different but the difference is really going to make a difference! When it comes to growing generationally we will start immediately taking things to the next level through an emphasis on the discipleship of teens and young adults while still continuing to show affirmation and appreciation for our younger and older generations.

III. Growing Digitally: Bringing the Gospel to the World

Bedrock Scripture: Matthew 28:16-20

How much further and how much faster could the disciples of the early church have spread the gospel with the tools of technology that we have at our disposal today? The digital age is here to stay. The completion of the Exodus 36 Project has made a profound impact on both our congregation and others. As a result of this, predominantly black churches in the city of Louisville are going to look very different in the immediate future. Also, with progressive measures of ministry such as our podcast and even the usage of Artificial Intelligence, as a church we are ahead of the curve and we are once again the standard bearer in our faith community for how to intertwine technology with theology. For those that are having difficulty navigating through this digital era, we have a plan. Our staff is prepared to train, troubleshoot, and take you through any technological changes and challenges that you may be experiencing. We will continue to expand our horizons in this digital era. Some immediate initiatives will be enhancing our online presence and experiences. For example: Offering an online Sunday School experience as well as cultivating an online church membership experience. Here we GROW again!

VISION 2030



IV. Growing Financially: Breaking the Bonds of Debt

Bedrock Scripture: Romans 13:8

The Mortgage Balance in January 1, 2021 was \$867,330.13. As of December 13, 2023 the mortgage balance is \$607,925.25. Because of your generosity we have been able to not only pay our monthly mortgage but also pay extra principal payment on our mortgage. If we keep this pace we will definitely be able to pay off our mortgage in 2030 and possibly a little time before 2030. We don't just want our church as an institution to be debt free, we want our church and all of its individuals to be debt free. Moving forward we will offer talks, teachings, and tools necessary for you and your family to become liberated from the bonds of financial debt. If the church helps its members get out of debt, the members will be more able and willing to get the church out of debt. We are well on our way. Let's continue to say YES to NO Debt!

V. Growing Communally: Building "The Beloved Community"

Bedrock Scripture: Deuteronomy 6:10-13

The Beloved Community refers to Dr. King's global vision, in which all people can share in the wealth of the earth. In the Beloved Community, poverty, hunger and homelessness will not be tolerated because international standards of human decency will not allow it.

Since its inception the First Gethsemane Center of Family Development Inc has been committed to Reducing Barriers of Success for Individuals and Families. We have already been in conversation with our new councilman, Phillip Baker regarding enhancing current programs but also expanding to new programs. Such programs that would include mental health resources, HBCU college tour, support for seniors, workforce development, and more.

As we grow into greater, we must also come to grips with the fact that our current center for family development can in no way house our vision of a Beloved Community here in Louisville. As a consequence, we must build a new facility that will serve as a city within a city, an oasis in the desert, a headquarters for community hope and help. We already have adequate land to do this but now we must start developing plans and partnerships to bring this vision to pass.

The Exodus 36 Project was certainly a faith walk. Somehow in the midst of a pandemic, mortgage payments, and all of the challenges and changes that this life affords the church, we transformed our gymnasium into a state of the art worship center. The same God that brought us victoriously through that is the same God that is going to get us through this. In Latin we say, "Dominus Providebit". The Lord will provide!

CENTER FOR FAMILY DEVELOPMENT

Greetings on behalf of the First Gethsemane Center for Family Development Inc.,

As the Chairman of the Board of Directors, I would like to once again express congratulations to Rev. Keith A. Bush Sr. on his retirement as our Executive Director and also congratulations to his appointed successor, Deacon Larry Harper. Rev. Bush has served faithfully and I am confident that because of the foundation that has been laid, the CFD has a bright future. We are certainly thankful for what the First Gethsemane Center for Family Development Inc. has already been able to accomplish these last few years. A few key accomplishments have been the successful completion of an audit, increase in revenue, and continued progress in the endeavor of becoming independent of the church financially. Thank you to our outgoing board members for your outstanding service. We are without a doubt properly positioned to achieve GREATER!

Congratulations are also in order for our new board members.
Welcome to the 1st G CFD Team!

Board of Directors

Jermaine Bradley

Ria Chandler

Tiffany Ellis

Michelle Houston

Lagenia James

Kevin Pringle

Erin Smith

Best regards,

Dr. Joshua A. Harris Sr.

Chairman of the Board

First Gethsemane Center for

Family Development Inc.



CFD Executive Director, Larry Harper pictured with Councilman Phillip Baker at this year's Christmas Dinner for the Community

DANIEL FAST 2024: FAST FORWARD

1st G Corporate Fast Dates: January 10th-31st

FAST: Two Fasting Options

The Traditional Daniel Fast: For more information regarding the Daniel Fast, food list, recipes, and other resources visit www.daniel-fast.com

Modified Daniel Fast: This is essentially the Daniel Fast with some slight modifications. In moderation you may have baked fish and whole-wheat bread. You are still encouraged to do mostly fruits and vegetables for your meals.

Eating Window: 12 pm-8 pm (8 hours)

Fasting Window: 8 pm- 12 pm (16 hours)

*Nothing but Water during Fasting Window

IMPORTANT NOTE: Limit your time on Social Media during the Fasting Window. You should also limit your television consumption during this time. Increase your time with God, His word, and your family!

PRAY

Daily 8 am Prayer Call Information: Dial (267) 807-9598, When prompted Dial Access Code 481-771-646. If you miss the call, please call to access the recording by dialing (267) 807-9599 and when prompted Dial Access Code 481-771-646.

STUDY

Read at least one chapter of Proverbs per day. There are 31 chapters in Proverbs & 31 days in the month of January. Read a chapter that matches up with the date. Also read and study the Book of Acts. Keep a journal throughout this season of fasting. God will be speaking to you!



C.A.R.E. TEAM - TRIBES

At 1st G we C.A.R.E.! (Care Assist Relate Encourage)

The Purpose of our Congregational Care Ministry, The CARE Team?

To assist the Pastor in providing congregational care for members by:

- Nurturing the body, mind, and spirit in health and illness
- Equipping members to serve each other
- Praying for and with each other
- Assisting to provide Care and compassion to our 1st G members and their families



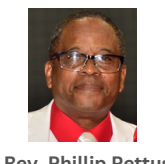


What to do in the event of illness or death:

In the event of a death or medical emergency please contact the church office ASAP. If you are unable to reach anyone at the church due to the event taking place beyond our church office hours (10 am-4 pm), please contact your assigned CARE Team Tribe.

Special Note regarding Death: Once contact has been made with either the church office or the C.A.R.E. Team, The Pastor/Executive Assistant to the Pastor will respond to each bereaved family with a call to extend condolences, offer prayer, and to schedule a time for a bereavement meeting.

***It is important that before the bereaved family goes to make arrangements with the funeral home, they make sure that the date and time is available via the Executive Assistant to the Pastor.**

****Every member has been assigned to a 1st G Tribe according to the first initial of their last name.***

Tribe of Benjamin (A-F) (502) 212-6583 tribebenjamin@1stgchurch.org	Tribe of Judah (G-M) (502) 212-6941 tribejudah@1stgchurch.org	Tribe Reuben (N-S) (502) 212-6568 tribereuben@1stgchurch.org	Tribe Zebulun (T-Z) (502) 212-6912 tribezebulun@1stgchurch.org
 <p>Rev. Janice Carney</p>  <p>Rev. Patricia Daughtry</p>  <p>Dea. David Howard</p>  <p>Dea. Joseph Mitchell</p>  <p>Rev. Pauline Owens</p>  <p>Dea. Walter Yates</p>	 <p>Dea. Jerome Davis</p>  <p>Rev. Kim Dial</p>  <p>Rev. Charles Ford</p>  <p>Rev. JoAn McClendon</p>  <p>Rev. Rhonda Plunkett</p>  <p>Rev. Michael Plunkett</p>	 <p>Rev. Lillie Mae Pettus</p>  <p>Dea. Richard Price</p>  <p>Rev. Wanda Mitchell Smith</p>  <p>Dea. LaWarren Taylor</p>  <p>Rev. Phillip Pettus</p>  <p>Dea. Larry Harper</p>	 <p>Dea. Arthur Owens</p>  <p>Dea. Terrance Thomas</p>  <p>Rev. Carmelita Weakley</p>  <p>Rev. Ronald Weakley</p>  <p>Rev. Michael Wells</p>

IMPORTANT DATES

January - Vision Month (Blood Donor Month)

10-31 Daniel Fast

14 - MLK Sunday

26-28 - Leadership Conference

28 - Vision Sunday/Ministry Fair (Installation Sunday)

February - Black History Month (American Heart Month)

1st Sunday- Greek/College Sunday (Represent your BGLO or College)

2nd Sunday - "Super Soul Sunday" (Sports Jersey Sunday)

3rd Sunday - Throwback Sunday (Wear your Traditional Sunday's Best Attire, All Black for Music Ministry)

4th Sunday - Heritage Sunday (wear your African Attire) / Black Marketplace 12pm-2pm - CFD

March - Marriage Month (National Nutrition Month)

10 - Marriage Sunday / Daylight Savings

24 - Palm Sunday

24 - 30 - Holy Week -- Christ Alive

29 - Good Friday (Video)

30 - Kidz Zone Eggstravaganza @CFD

31 - Resurrection Sunday (Easter)

April - Pastor & People Month (Alcohol Awareness/Sexual Assault)

7 - 3rd Pastor & People Anniversary

May - Church Anniversary Month (Mental Health Awareness)

2 - National Day of Prayer

12 - Mother's Day

17-18 Music Workshop (Homecoming Choir)

19 - Church Anniversary / Pentecost Sunday

June - (Men's Health Month - Men's Health Fair/UofL Health)

9 - Graduation Sunday

19 - Juneteenth (Church Office Closed)

24-27 - CDBA Annual Session

30 - Youth Day / Cookout

July - (Healthy Vision Month - Emphasis on Youth)

10-12 - Vacation Bible School

TBD - Back to School Giveaway

14 - Safety Appreciation Day

August - Selah Month (National Immunization Month)

7 - JCPS Back to School

TBD - Senior Day at the Fair

25 - Teacher Appreciation Sunday

September - Back to Church Month (Suicide Prevention Month / Prostrate Cancer)

TBD - Give for Good Louisville

8 - Senior Day Grandparents Day

15 - Back to Church Sunday

22 - Fall Begins

24-26 Fall Revival

October - Sisterhood Month (Breast Cancer Awareness / Domestic Violence Month)

27 - Women's Day

20 - Harvest Festival

TBD - Other Sisterhood Events

15 - Joint Council Meeting

23 - Virtual Public Budget Review

23 Oct - 22 Nov - Public Review / Comment Form Submission

November - Brotherhood Month (American Diabetes Month)

24 - Men's Day

TBD - Other Men's Day Events

28-29 - Church Office Closed

December - (National HIV/Aids Awareness Month)

3 - Tuesday Giving Day

15 - Pajamas w/Jesus

18 - Christmas Concert

19 - Annual Church Conference

22 - Ugly Christmas Sweater

23-27 - Church Office Closed

Baptisms @6:30pm

March 13 / June 12 / Sept 11 / Dec 11

New Member Orientation @12pm

March 16 / June 15 / Sept 14 / Dec 14

**These calendar dates are subject to change either by addition or subtraction under pastoral advisement.*

1ST G LEADERSHIP TEAM

Leadership Team

Our leadership and department heads are one team that exists to serve by using their gifts, energy and resources to make life within the Lord's church a great experience for everyone.



Dr. Joshua A. Harris, Sr.
Pastor



Bro. Carl Moore
Minister of Worship
& Media Arts



Sis. Alexis Williams
Executive Administrative
Assistant to the Pastor



Dea. Richard Price
Chair of Deacons Ministry



Sis. Jessica Huggins
Chair of Trustee Ministry



Rev. Rhonda Plunkett
Associate Ministers Coordinator

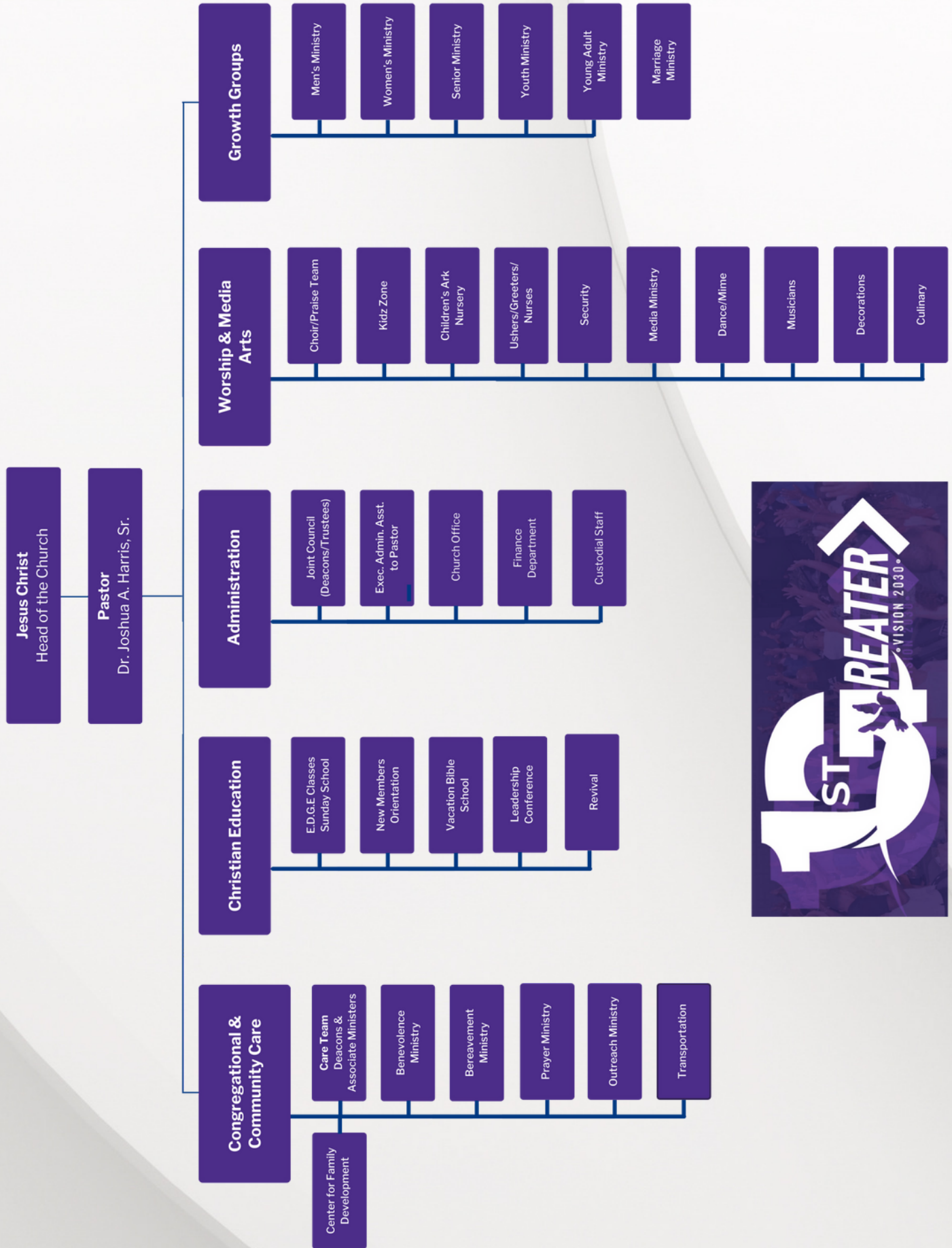


Sis. Sara Barbour
Director of Christian Education



Dea. Larry Harper
Executive Director, First Gethsemane
Center for Family Development

ORGANIZATIONAL CHART



1ST G IN ACTION



QR CODES



<http://tinyurl.com/1stG2023MinistryReports>



2023 Ministry Reports

<http://tinyurl.com/1stGVision2030>



1st G Vision 2030

<https://1stgchurch.org>



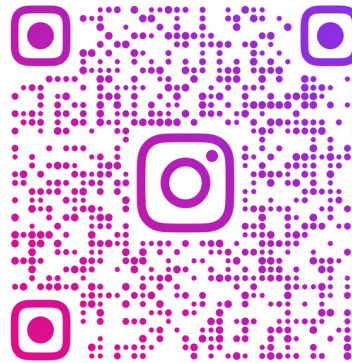
1st G Church Website

<http://tinyurl.com/My1stGTV>



**1stGTV
YouTube Channel**

<https://www.instagram.com/1stgchurch/>



**1st G Church
Instagram**

<https://www.facebook.com/1stGChurch>



**1st G Church
Facebook**

WAYS TO GIVE



Mail Donations to us:



First Gethsemane Church
PO Box 21872
Louisville, KY 40221

*Please make brief note to
where you would like funds
to be applied.*

**EasyTithe Online or
Text to Give:**

easyTithe

Give via EasyTithe in the
giving form below or Text
"GIVE" to 502-200-8807.

Email

Finance@1stGChurch.org
for questions or concerns

**Givelify Mobile App
and Online:**

Givelify

Click on the logo above or
download the Givelify App
to your mobile device and
search for "First
Gethsemane Baptist
Church"

**In-Person on
Sundays**



A trustee will be at the
church from 9am – 12pm
on Sundays for you to
drop-off your tithe or
offerings.

JOIN US IN-PERSON OR ONLINE

SUNDAY WORSHIP TIMES

E.D.G.E. Sunday School @ 9:00AM

Morning Worship @ 10:10AM

Kidz Zone @ 10:10AM | Children's Ark Nursery @ 10:10AM

WEDNESDAY BIBLE STUDY

BibleCast (Podcast)/Bible Study @ 6:30PM

8AM- WEEKLY PRAYER CALL:

Dial: 267-807-9598 / Access code: 481 771 646

Replay Dial: 267-807-9599 /Access Code: 481 771 646

STAY CONNECTED

Office Hours: Tuesday - Friday, 10:00 AM - 4:00 PM

Email: 1stgoffice@1stgchurch.org

Call/Text/Fax: (502)635-7906

GET TEXT ALERTS!

Text "@1stGBC2" to 81010



First Gethsemane Baptist Church
1159 Algonquin Parkway
Louisville, Kentucky 40208

w w w . 1 s t G c h u r c h . o r g